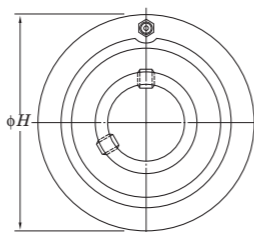
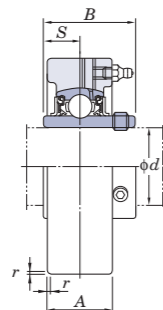


UCC
Cylindrical bore (with set screws)
d 12 ~ (45) mm



d (45) ~ 85 mm

Variations of tolerance of outside diameter (ΔH_h), variations of tolerance of width (ΔA_s), and tolerance of circumferential runout of outside diameter (Y)

Housing No.		ΔH_h	ΔA_s	Y	
C204~C205		0 -0.030	±0.2	0.2	
C206~C210	CX05~CX08 C305~C308 C309~C310	0 -0.035 0			
C211~C213	CX09~CX10 C311~C314 C315~C318 C319	0 -0.040 0 -0.046	±0.3	0.3	
	C320~C322 C324~C328	0 -0.052 0 -0.057			
					0.4

Shaft Dia. mm inch <i>d</i>	Dimensions inch mm					Unit No.	Housing No.	Bearing No.	Basic Load Ratings kN		Factor <i>f</i> ₀	Mass kg
	H	A	r	B	S				C _r	C _{0r}		
	12 1/2									UCC201 UCC201-8 UCC202		
15 5/8	2.835 72	25/32 20	0.06 1.5	1.220 31	0.500 12.7	UCC202-10 UCC203 UCC204-12 UCC204	C204	UC202-10 UC203 UC204-12 UC204	12.8 6.65	13.2	0.50 0.49 0.47	
20	7/8 15/16					UCC205-14 UCC205-15 UCC205		UC205-14 UC205-15 UC205			0.64	
25	1	3.150 80	55/64 22	0.06 1.5	1.343 34.1	0.563 14.3	UCC205-16	UC205-16	14.0 7.85	13.9	0.64	
	1	3.543 90	1 1/16 27	0.06 1.5	1.500 38.1	0.626 15.9	UCCX05 UCCX05-16	UCX05 UCX05-16	19.5 11.3	13.9	1.0	
	1	3.543 90	1 1/32 26	0.08 2	1.496 38	0.591 15	UCC305 UCC305-16	UC305 UC305-16	21.2 10.9	12.6	1.5	
	1 1/8	3.346 85	1 1/16 27	0.06 1.5	1.500 38.1	0.626 15.9	UCC206-18 UCC206 UCC206-19 UCC206-20	UC206-18 UC206 UC206-19 UC206-20	19.5 11.3	13.9	0.81	
30	1 3/16	3.937 100	1 3/16 30	0.08 2	1.689 42.9	0.689 17.5	UCCX06 UCCX06-19 UCCX06-20	UCX06 UCX06-19 UCX06-20	25.7 15.4	13.9	1.3	
	1 1/4	3.937 100	1 7/64 28	0.08 2	1.693 43	0.669 17	UCC306	UC306	26.7 15.0	13.3	1.7	
	1 1/4	3.543 90	1 7/64 28	0.08 2	1.689 42.9	0.689 17.5	UCC207-20 UCC207-21 UCC207-22 UCC207	UC207-20 UC207-21 UC207-22 UC207	25.7 15.4	13.9	0.93	
	1 7/16	4.331 110	1 11/32 34	0.08 2	1.937 49.2	0.748 19	UCCX07-22 UCCX07	UCX07-22 UCX07	29.1 17.8	14.0	1.7	
	1 7/16	4.331 110	1 17/64 32	0.12 3	1.890 48	0.748 19	UCCX07-23 UCC307	UCX07-23 UC307	33.4 19.3	13.2	2.2	
35	1 9/16	3.937 100	1 3/16 30	0.08 2	1.937 49.2	0.748 19	UCC208-24 UCC208-25 UCC208	UC208-24 UC208-25 UC208	29.1 17.8	14.0	1.2	
	1 1/2	4.724 120	1 1/2 38	0.08 2	1.937 49.2	0.748 19	UCCX08-24 UCCX08	UCX08-24 UCX08	34.1 21.3	14.0	2.3	
40	1 1/2	4.724 120	1 11/32 34	0.12 3	2.047 52	0.748 19	UCC308-24 UCC308	UC308-24 UC308	40.7 24.0	13.2	2.2	
	1 5/8	4.331 110	1 7/32 31	0.08 2	1.937 49.2	0.748 19	UCC209-26 UCC209-27 UCC209-28 UCC209	UC209-26 UC209-27 UC209-28 UC209	34.1 21.3	14.0	1.5	

- Remarks
- In Part No. of unit and units with covers, fitting codes follow bore diameter numbers. (See **Table 10.5** in P.62.)
 - Part No. of applicable grease fittings are shown below.
A-1/4-28UNF 201~213, X05~X12, 305~308
A-R1/8..... 309~328
 - As for the triple seal type product (from 201 to 205 are the double seal type products), suffix code L3 (L2) follows the Part No. of unit or bearing.
(Example of Part No. : UCC206JL3, UC206L3)
 - For the dimensions and forms of applicable bearings, see the dimensional tables of ball bearing for unit.

Shaft Dia. mm inch <i>d</i>	Dimensions inch mm					Unit No.	Housing No.	Bearing No.	Basic Load Ratings kN		Factor <i>f</i> ₀	Mass kg
	H	A	r	B	S				C _r	C _{0r}		
	45	1 11/16 1 3/4	4.724 120	1 1/2 38	0.08 2				2.031 51.6	0.748 19		
45	1 3/4	5.118 130	1 1/2 38	0.12 3	2.244 57	0.866 22	UCC309-28 UCC309	C309	UC309-28 UC309	48.9 29.5	13.3	2.8
50	1 7/8 1 15/16	4.724 120	1 19/64 33	0.08 2	2.031 51.6	0.748 19	UCC210-30 UCC210-31 UCC210 UCC210-32	C210	UC210-30 UC210-31 UC210 UC210-32	35.1 23.3	14.4	2.0
	1 15/16	5.118 130	1 37/64 40	0.1 2.5	2.189 55.6	0.874 22.2	UCCX10-31 UCCX10 UCCX10-32	CX10	UCX10-31 UCX10 UCX10-32	43.4 29.4	14.4	2.8
	2	5.512 140	1 37/64 40	0.12 3	2.402 61	0.866 22	UCC310	C310	UC310	62.0 38.3	13.2	3.2
	2 2 1/8 2 3/16	4.921 125	1 3/8 35	0.1 2.5	2.189 55.6	0.874 22.2	UCC211-32 UCC211-34 UCC211 UCC211-35	C211	UC211-32 UC211-34 UC211 UC211-35	43.4 29.4	14.4	2.2
55	2 3/16 2 1/4	5.906 150	1 21/32 42	0.1 2.5	2.563 65.1	1.000 25.4	UCCX11 UCCX11-35 UCCX11-36	CX11	UCX11 UCX11-35 UCX11-36	52.4 36.2	14.4	4.0
	2	5.906 150	1 47/64 44	0.12 3	2.598 66	0.984 25	UCC311 UCC311-32 UCC311-35	C311	UC311 UC311-32 UC311-35	71.6 45.0	13.2	3.9
	2 1/4	5.118 130	1 1/2 38	0.1 2.5	2.563 65.1	1.000 25.4	UCC212-36 UCC212 UCC212-38 UCC212-39	C212	UC212-36 UC212 UC212-38 UC212-39	52.4 36.2	14.4	2.6
	2 7/16	6.299 160	1 47/64 44	0.1 2.5	2.563 65.1	1.000 25.4	UCCX12 UCCX12-39	CX12	UCX12 UCX12-39	57.2 40.1	14.4	4.6
60	2 7/16	6.299 160	1 13/16 46	0.12 3	2.795 71	1.024 26	UCC312 UCC312-39	C312	UC312 UC312-39	81.9 52.2	13.2	4.8
	2 1/2	5.512 140	1 37/64 40	0.1 2.5	2.563 65.1	1.000 25.4	UCC313-40 UCC213	C213	UC213-40 UC213	57.2 40.1	14.4	3.0
	2 1/2	6.693 170	1 31/32 50	0.12 3	2.953 75	1.181 30	UCC313-40 UCC313	C313	UC313-40 UC313	92.7 59.9	13.2	5.7
70	2 3/4	7.087 180	2 3/64 52	0.12 3	3.071 78	1.299 33	UCC314-44 UCC314	C314	UC314-44 UC314	104 68.2	13.2	6.7
75	2 15/16	7.480 190	2 11/64 55	0.16 4	3.228 82	1.260 32	UCC315-47 UCC315 UCC315-48	C315	UC315-47 UC315 UC315-48	113 77.2	13.2	7.8
	3	7.874 200	2 23/64 60	0.16 4	3.386 86	1.339 34	UCC316	C316	UC316	123 86.7	13.3	9.2
80	-	8.465 215	2 33/64 64	0.16 4	3.780 96	1.575 40	UCC317	C317	UC317	133 96.8	13.3	11.7